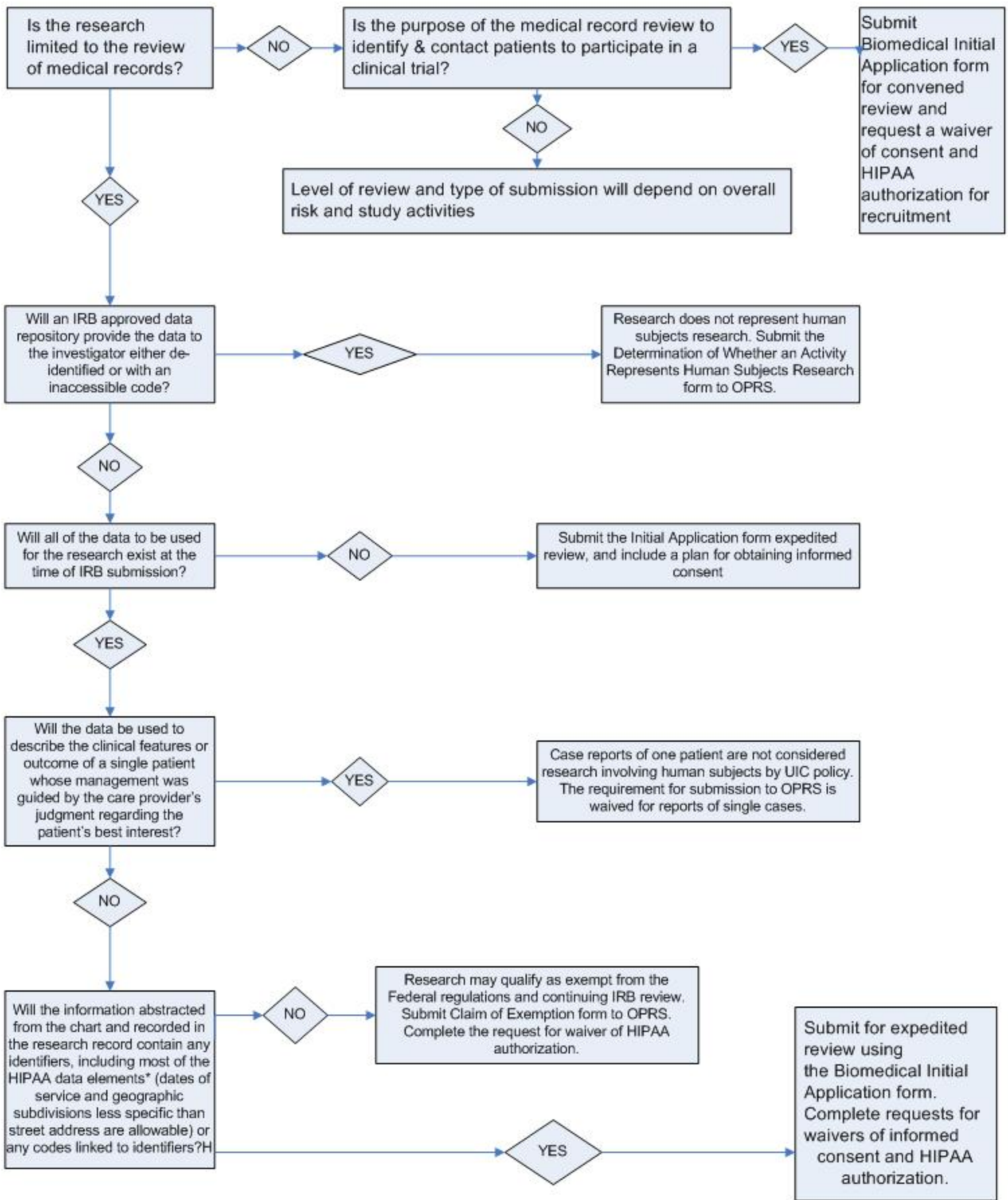


Decision Tree for Submitting Medical Record Review Research to UIC OPRS/IRB



* 1). names, 2). geographic subdivisions as specific as street address, 3). birth date and date of death, 4). telephone numbers, 5). fax numbers, 6). vehicle identifiers and serial numbers, including license plate #, 7). electronic mail addresses, 8). device identifiers and serial numbers, 9). social security numbers, 10). web Universal Resource Locators (URLs), 11). medical record numbers, 12). Internet Protocol (IP) address numbers, 13). health plan beneficiary numbers, 14). biometric identifiers, including finger and voice prints, 15). account number, 16). full face photographic images and any comparable images, 17). certificate/license numbers, or 18). any other unique identifying number, characteristic, or code.
 H This question refers only to what is being recorded in the research record. Receiving and viewing medical record data with identifiers, including PHI, or preparing a list of records for retrieving information is acceptable; however, the information retained in the permanent research record must be de-identified. Investigator must be a part of the covered entity.